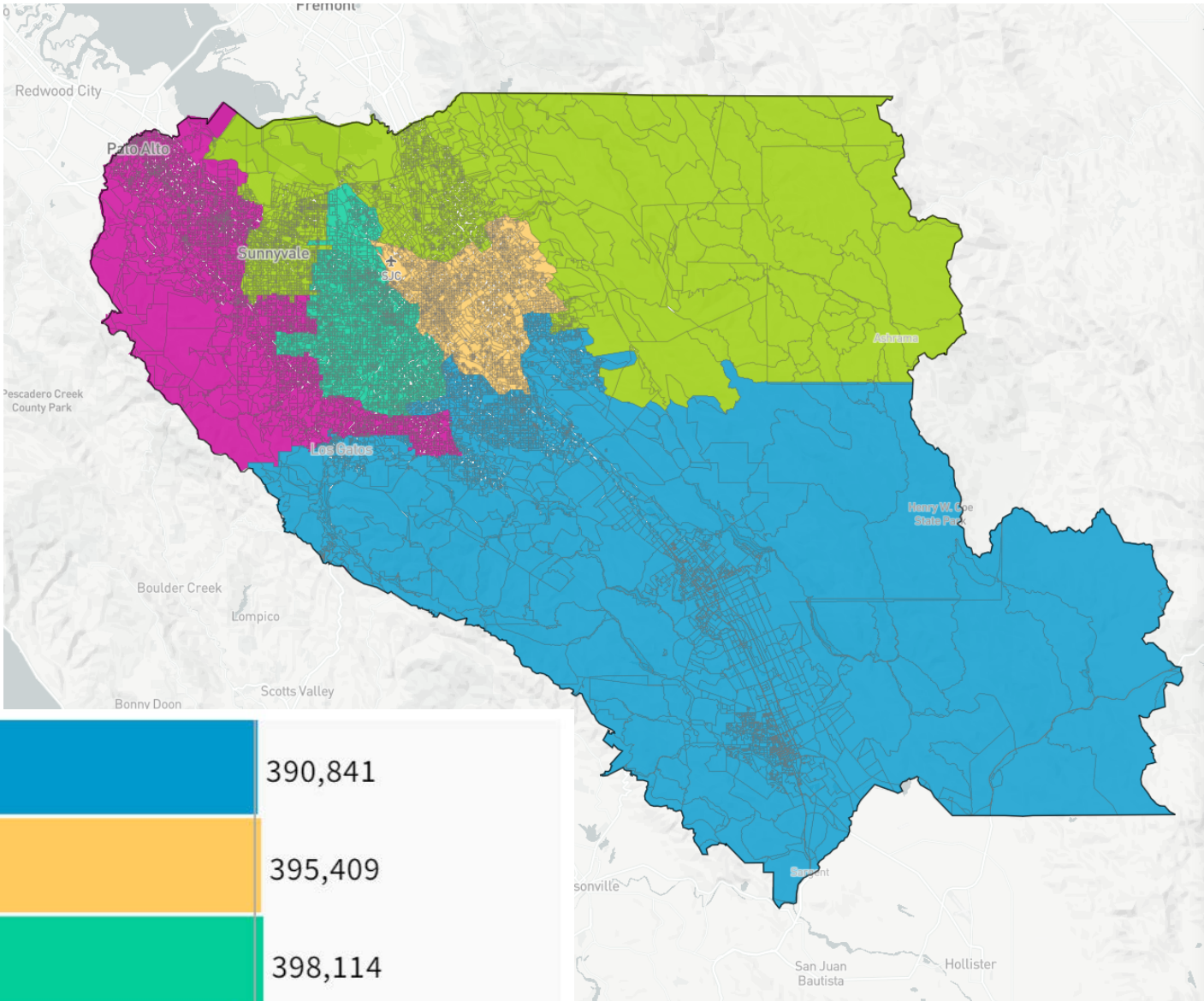


# 88380 Map



Population    Data Layers    **Evaluation**

## Population by Race

COMPARE

WITH

AND

	Asian	White	Hispanic
1	26.7%	34.3%	30.9%
2	33.6%	12.7%	47.6%
3	35.2%	35.5%	20.9%
4	60.2%	18.5%	15.4%
5	39.9%	42.7%	9.9%
<b>Overall</b>	<b>38.9%</b>	<b>28.7%</b>	<b>25.2%</b>

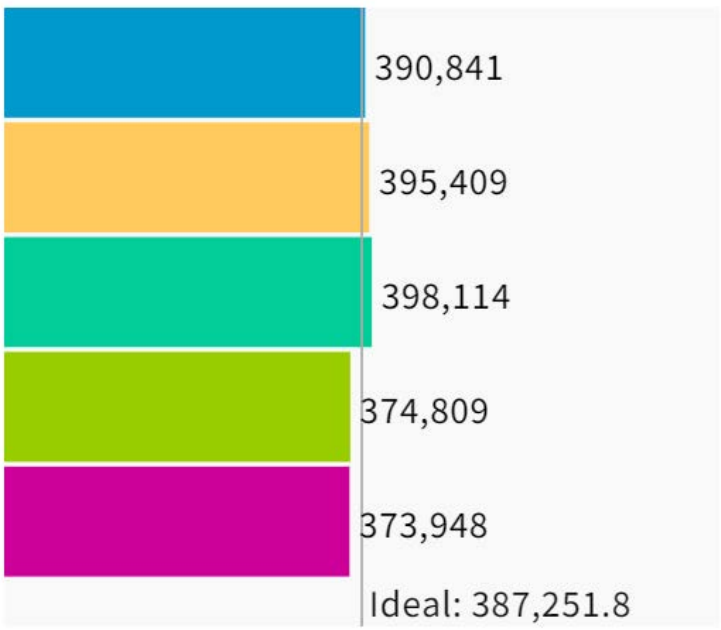
## Citizen Voting Age Population by Race

COMPARE

WITH

AND

	Asian	Hispanic	Black
1	22.4%	24.2%	2.5%
2	35.4%	38%	3.2%
3	23.4%	16%	2.8%
4	50.2%	14.7%	2.4%
5	30.4%	6.6%	1.4%
<b>Overall</b>	<b>31.6%</b>	<b>20.3%</b>	<b>2.5%</b>



UNASSIGNED POPULATION: 3,138  
 MAX. POPULATION DEVIATION: 3.44%

