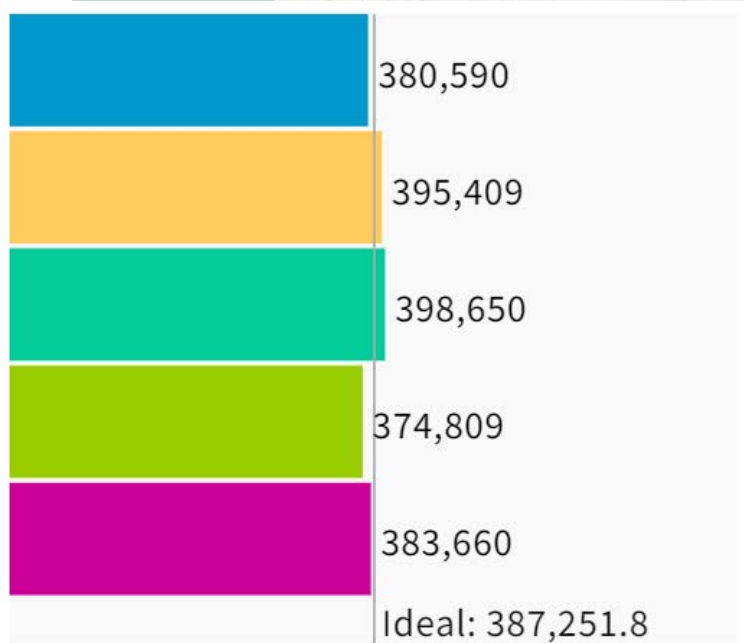
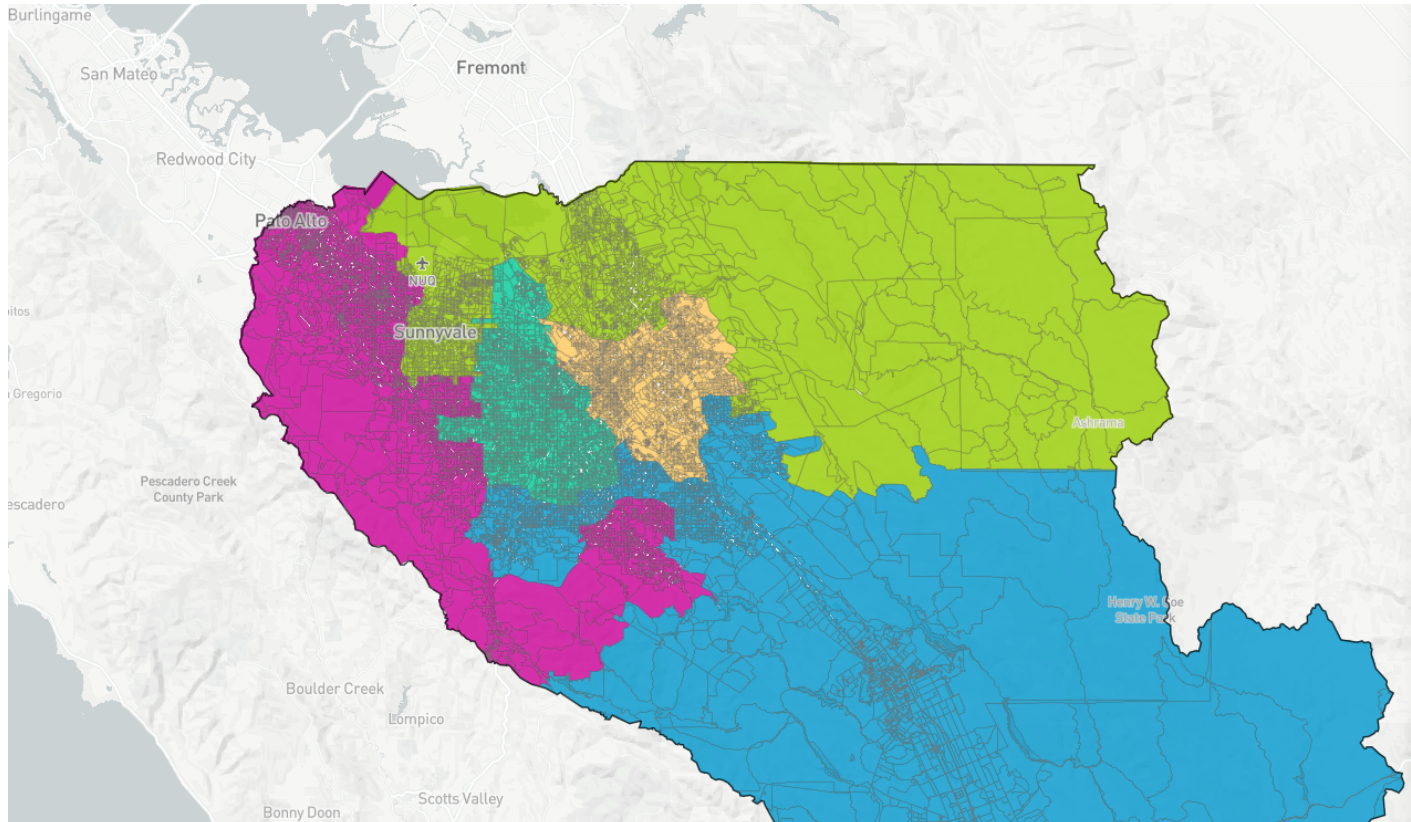
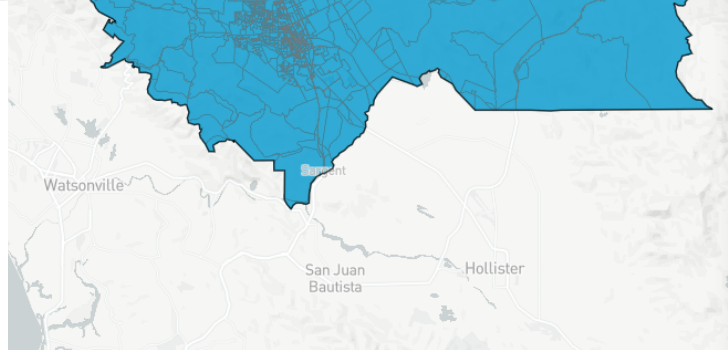


# 88227 Map



UNASSIGNED POPULATION:  
MAX. POPULATION DEVIATION:

3,141  
3.21%



Population Data Layers Evaluation

### Population by Race

COMPARE: Asian population

WITH: White population

AND: Hispanic population

	Asian	White	Hispanic
1	25.8%	35.1%	31%
2	33.6%	12.7%	47.6%
3	35.3%	35.5%	20.9%
4	60.2%	18.5%	15.4%
5	40.4%	41.7%	10.4%
Overall	38.9%	28.7%	25.2%

### Citizen Voting Age Population by Race

COMPARE: Asian population

WITH: Hispanic population

AND: Black population

	Asian	Hispanic	Black
1	21.1%	24.6%	2.4%
2	35.4%	38%	3.2%
3	23.4%	15.9%	2.8%
4	50.2%	14.7%	2.4%
5	31.5%	6.9%	1.5%
Overall	31.6%	20.3%	2.5%