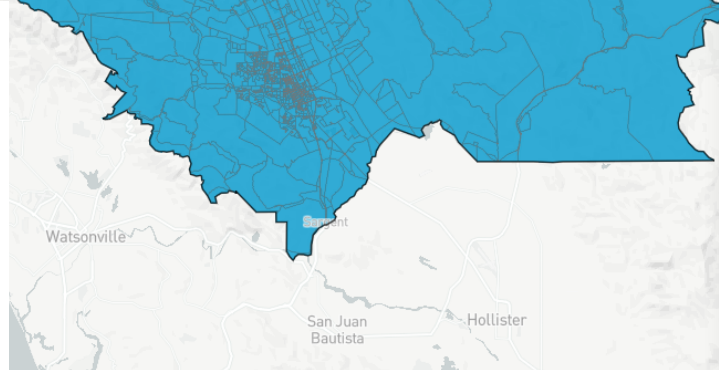
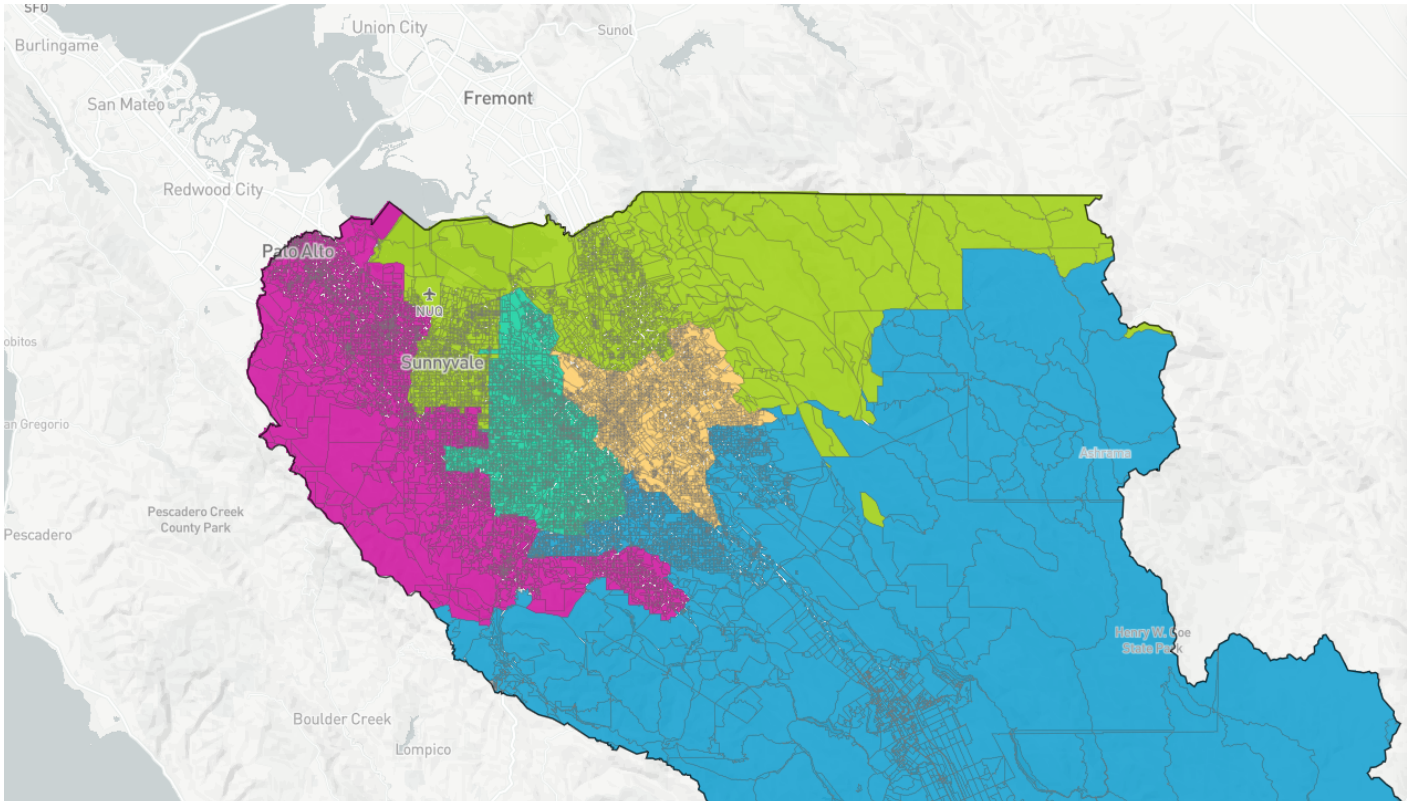


# 83549 Map



Population    Data Layers    **Evaluation**

## Population by Race

COMPARE

WITH

AND

	Asian	White	Hispanic
<b>1</b>	27.6%	32.9%	31.4%
<b>2</b>	33.5%	12.6%	47.7%
<b>3</b>	34.6%	35.9%	21.1%
<b>4</b>	59.7%	18.9%	15.3%
<b>5</b>	40.3%	43.5%	8.9%
<b>Overall</b>	38.9%	28.7%	25.2%

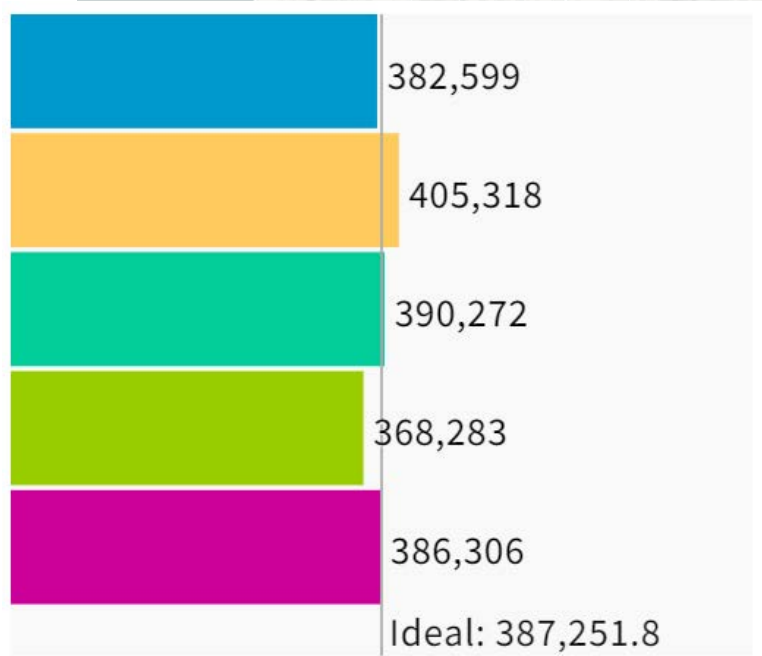
## Citizen Voting Age Population by Race

COMPARE

WITH

AND

	Asian	Hispanic	Black
<b>1</b>	23.1%	24.7%	2.4%
<b>2</b>	35.3%	38.1%	3.2%
<b>3</b>	23.2%	16.1%	2.8%
<b>4</b>	49.3%	14.9%	2.5%
<b>5</b>	30.8%	5.9%	1.4%
<b>Overall</b>	31.6%	20.3%	2.5%



UNASSIGNED POPULATION: 3,481  
 MAX. POPULATION DEVIATION: 4.9%