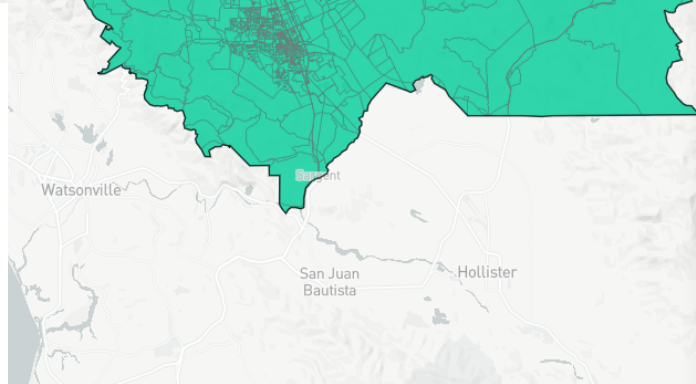
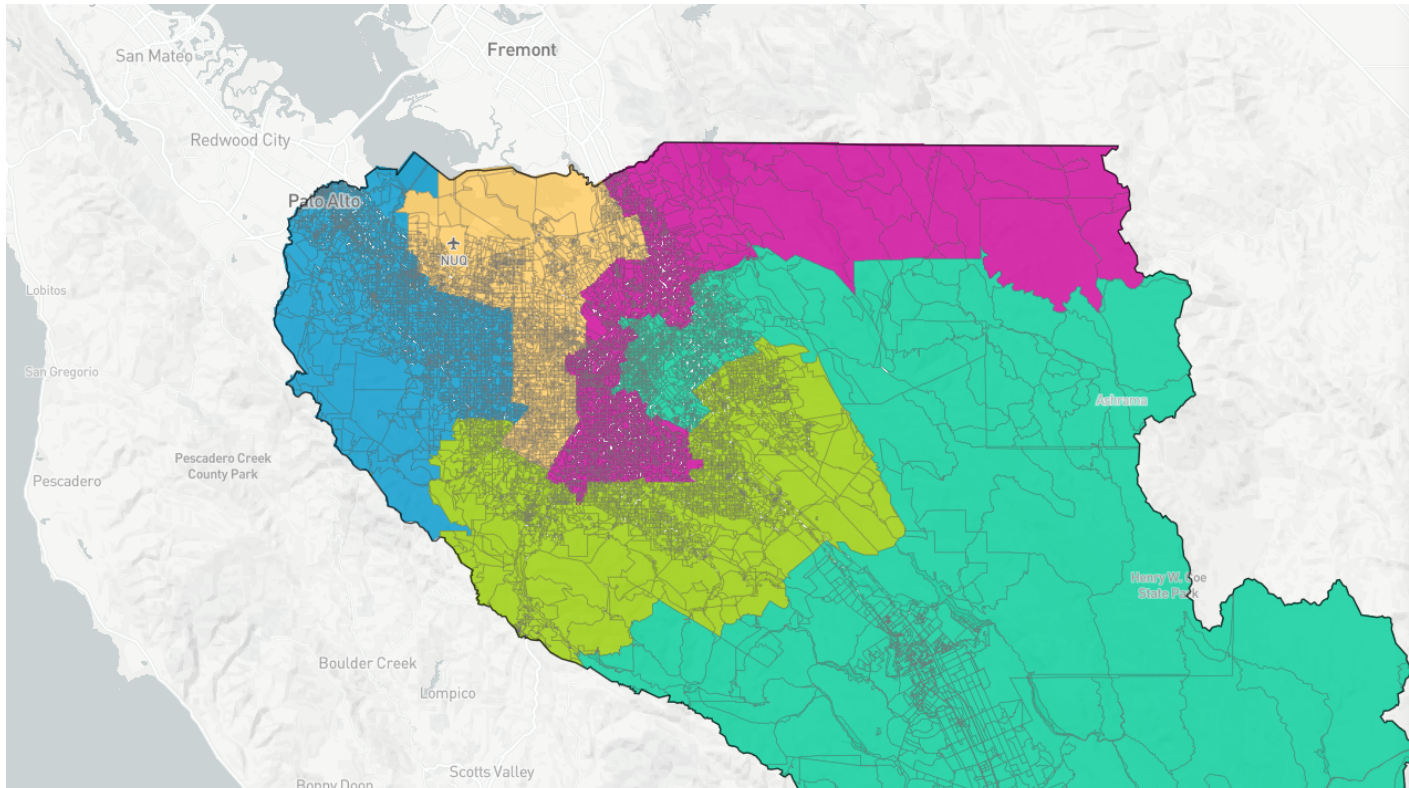


164 Revised Y2 Map (69519)



Population Data Layers **Evaluation**

Population by Race

COMPARE: Asian population

WITH: White population

AND: Hispanic population

| | Asian | White | Hispanic |
|----------------|--------------|--------------|--------------|
| 1 | 46.6% | 37% | 9.3% |
| 2 | 46.3% | 26.9% | 19.3% |
| 3 | 22.1% | 20.2% | 51.2% |
| 4 | 40% | 30% | 22.9% |
| 5 | 39.7% | 29.5% | 22.8% |
| Overall | 38.9% | 28.7% | 25.2% |

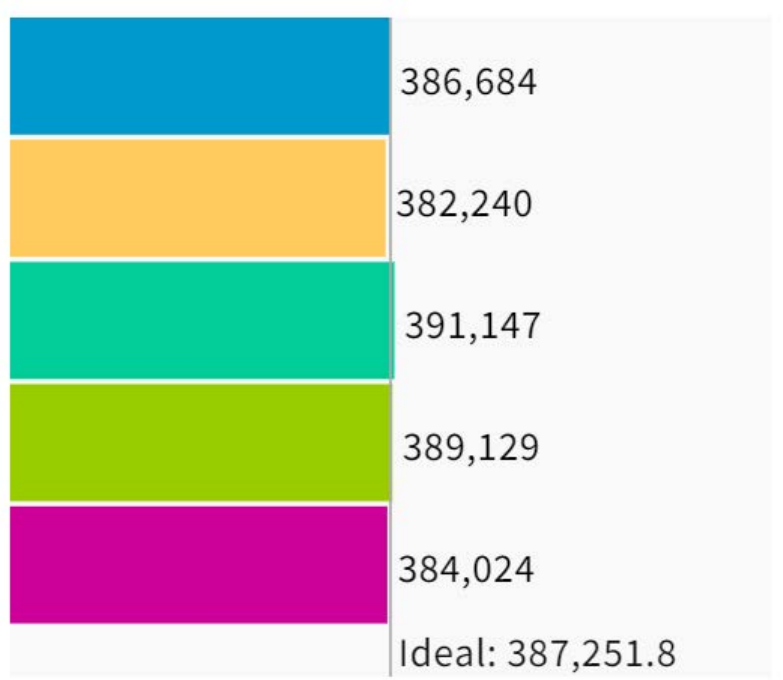
Citizen Voting Age Population by Race

COMPARE: Asian population

WITH: Hispanic population

AND: Black population

| | Asian | Hispanic | Black |
|----------------|--------------|--------------|-------------|
| 1 | 35.2% | 6.5% | 1.4% |
| 2 | 31.1% | 16.8% | 3.1% |
| 3 | 23.1% | 40.9% | 2.3% |
| 4 | 34.7% | 18.3% | 2.3% |
| 5 | 33.8% | 17.8% | 3.2% |
| Overall | 31.6% | 20.3% | 2.5% |



UNASSIGNED POPULATION: 3,035
 MAX. POPULATION DEVIATION: 1.29%

https://districtr.org/edit/69519?event=santa_clara_county