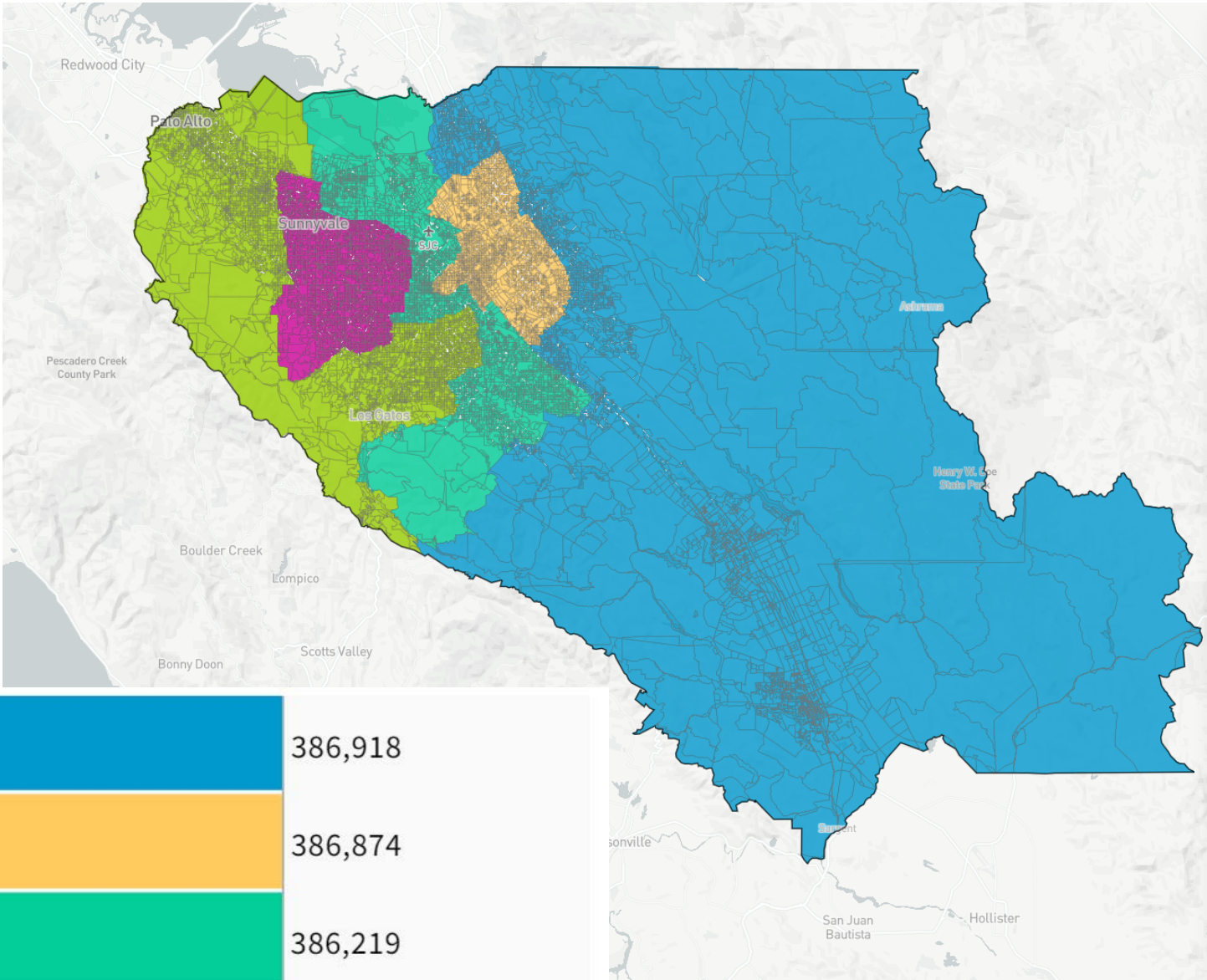


154 Plan 9 Map (96090)



Population Data Layers **Evaluation**

Population by Race

COMPARE

WITH

AND

	Asian	White	Hispanic
1	39.2%	21.8%	32.4%
2	41.5%	11%	41.7%
3	32.9%	31.8%	26.3%
4	28.7%	50.7%	12.3%
5	52.2%	28.3%	13.1%
Overall	38.9%	28.7%	25.2%

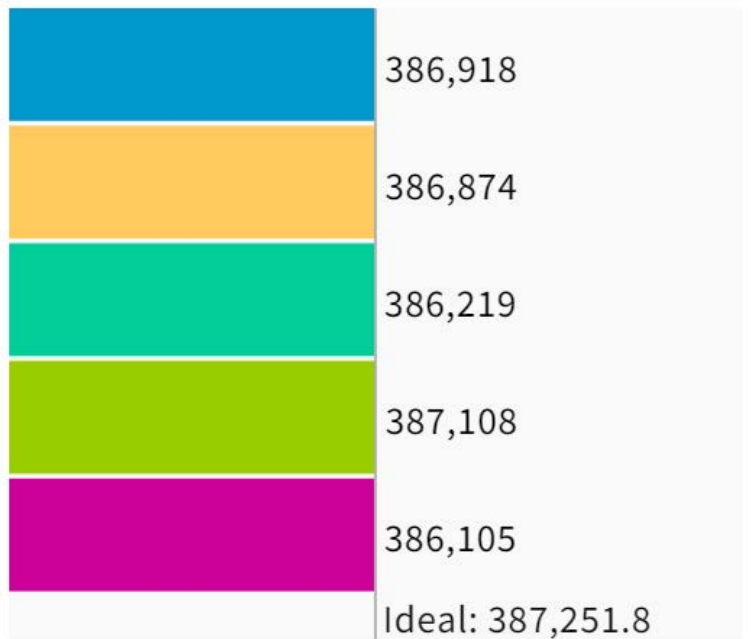
Citizen Voting Age Population by Race

COMPARE

WITH

AND

	Asian	Hispanic	Black
1	34.8%	27.4%	2.2%
2	43.2%	33.3%	3%
3	23.3%	20.9%	3.6%
4	20.2%	8.4%	1.5%
5	37.9%	10.9%	2%
Overall	31.6%	20.3%	2.5%



UNASSIGNED POPULATION: 3,035
 MAX. POPULATION DEVIATION: 0.3%