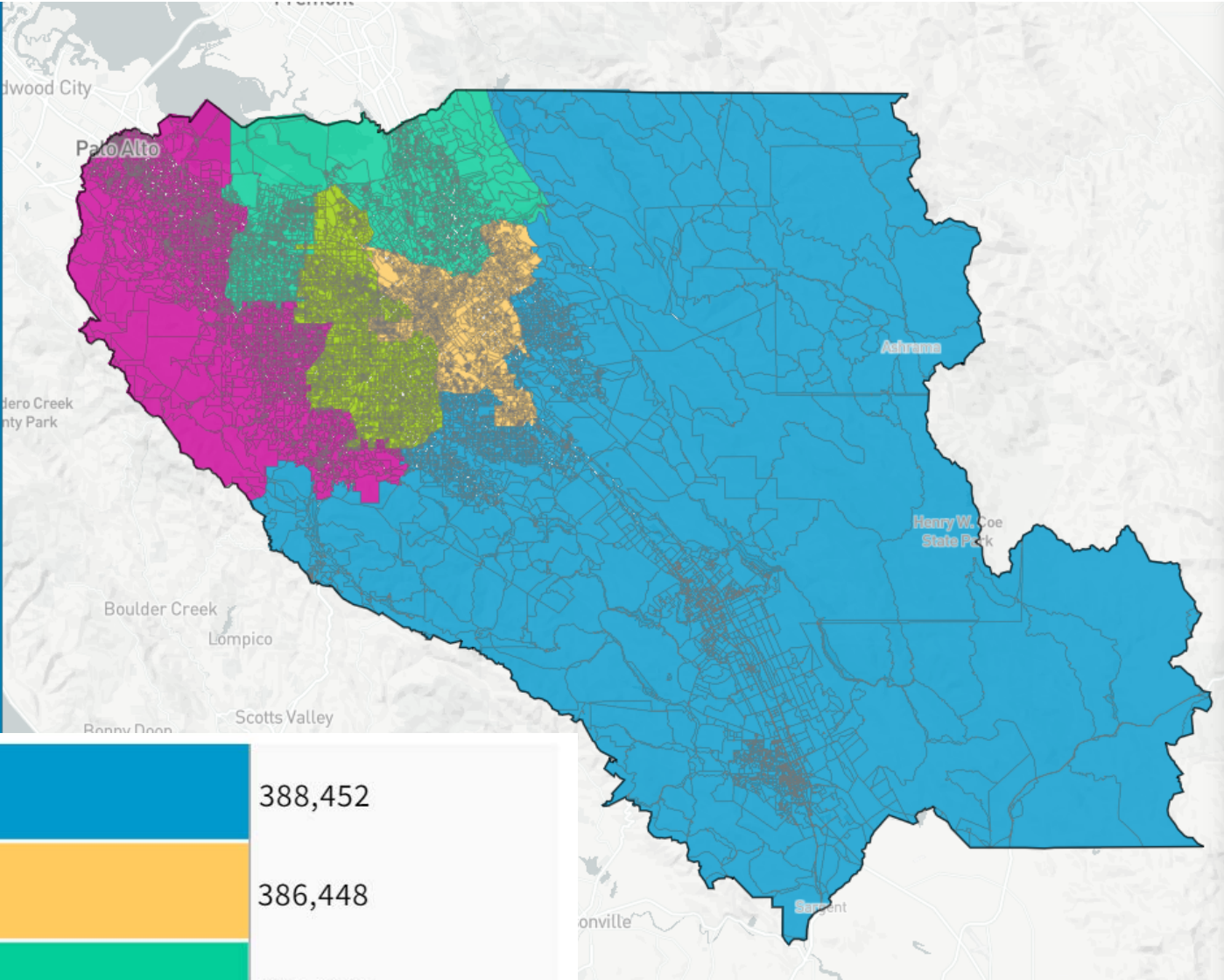


132 Commissioner Pham - A Proposed Map (68961)



Population Data Layers Evaluation

Population by Race

COMPARE Asian population

WITH White population

AND Hispanic population

	Asian	White	Hispanic
1	31.7%	31.4%	29.2%
2	29.1%	14.1%	50.2%
3	59.2%	18%	16.9%
4	31.2%	39%	21.1%
5	43.3%	41%	8.6%
Overall	38.9%	28.7%	25.2%

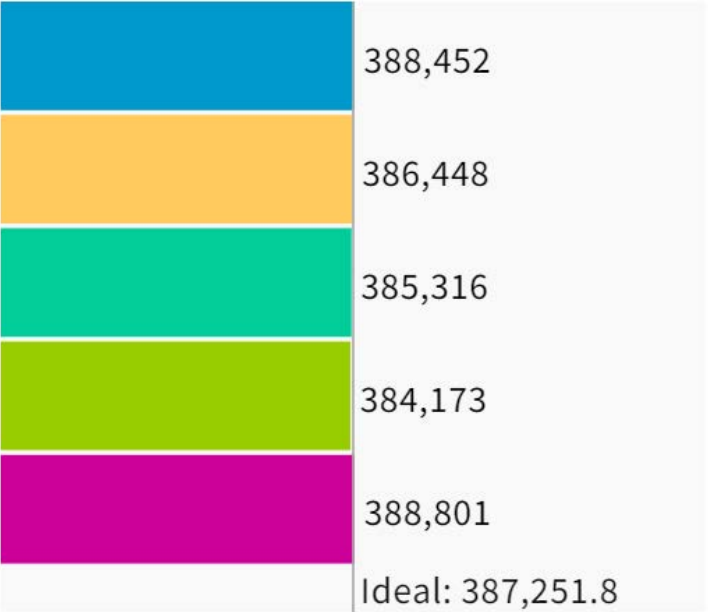
Citizen Voting Age Population by Race

COMPARE Asian population

WITH Hispanic population

AND Black population

	Asian	Hispanic	Black
1	27.6%	23.1%	2.5%
2	30.3%	40.7%	3.2%
3	50.1%	15.7%	2.5%
4	19.8%	15.7%	2.8%
5	33.3%	5.8%	1.3%
Overall	31.6%	20.3%	2.5%



UNASSIGNED POPULATION: 3,069

MAX. POPULATION DEVIATION: 0.8%