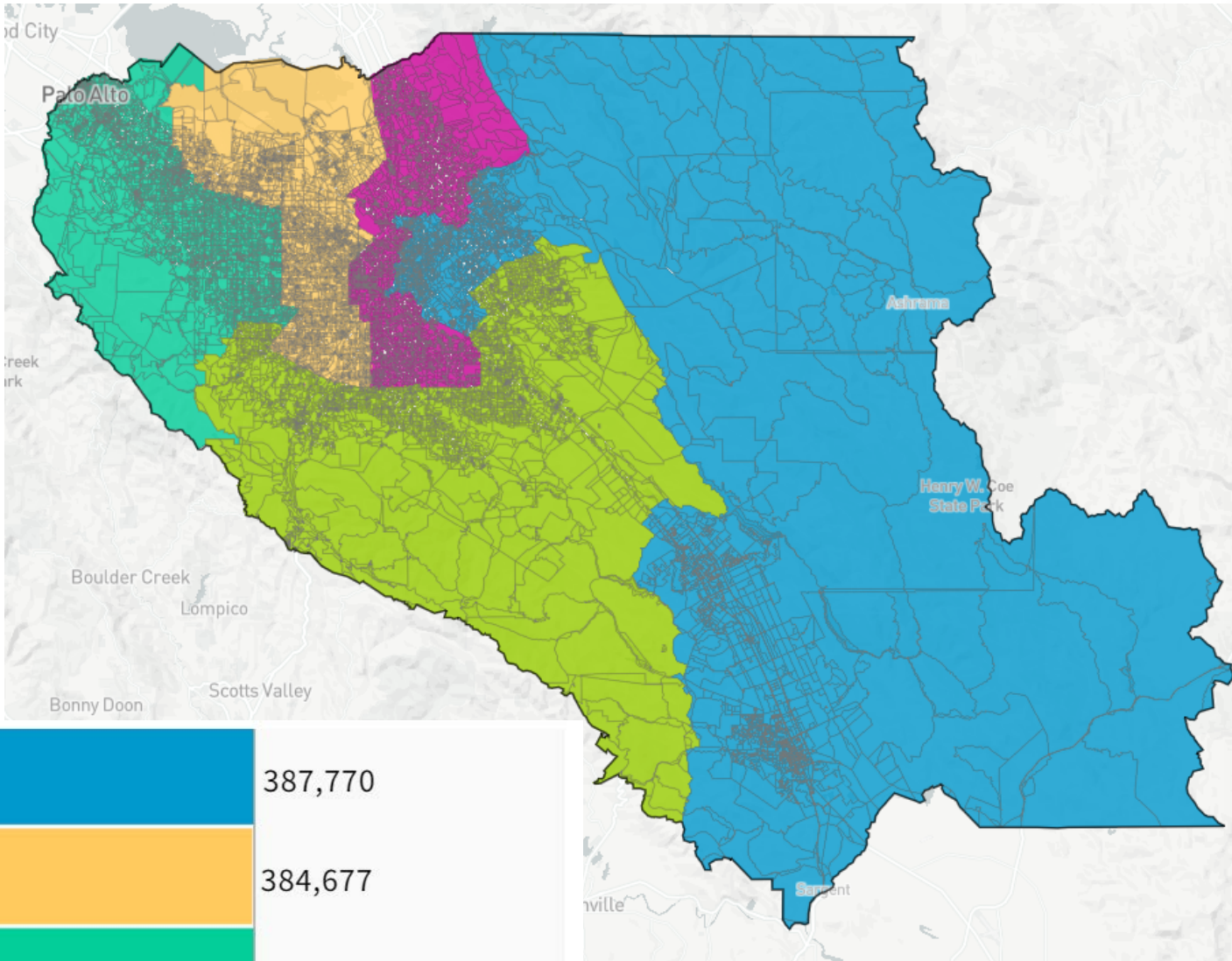


# 128 Forward Progress Map (68634)



Population    Data Layers    **Evaluation**

## Population by Race

COMPARE

WITH

AND

	Asian	White	Hispanic
1	22.3%	19.9%	51.4%
2	40.8%	31%	20.1%
3	46.7%	37%	9.3%
4	39.7%	30.9%	22.3%
5	45%	24.7%	22.6%
<b>Overall</b>	<b>38.9%</b>	<b>28.7%</b>	<b>25.2%</b>

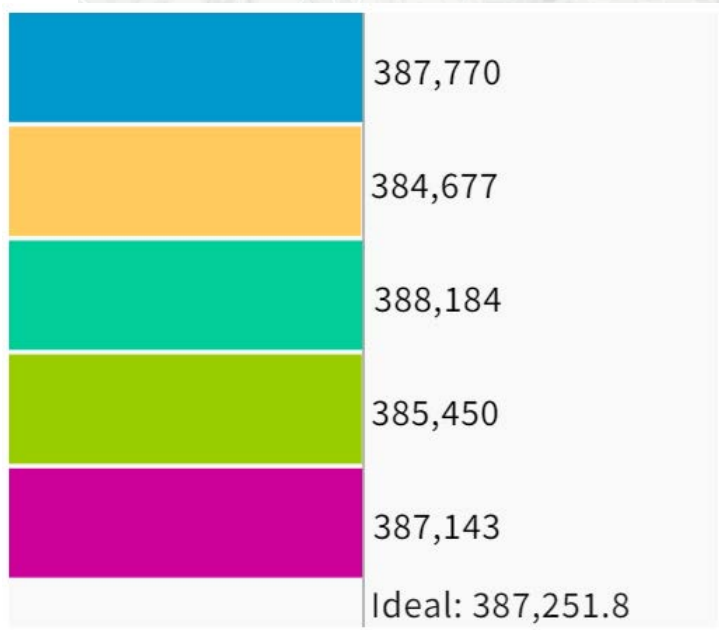
## Citizen Voting Age Population by Race

COMPARE

WITH

AND

	Asian	Hispanic	Black
1	23.2%	41.1%	2.3%
2	26.4%	16.9%	3%
3	35.3%	6.5%	1.4%
4	34.4%	17.9%	2.2%
5	38.2%	18.3%	3.4%
<b>Overall</b>	<b>31.6%</b>	<b>20.3%</b>	<b>2.5%</b>



UNASSIGNED POPULATION: 3,035  
 MAX. POPULATION DEVIATION: 0.66%