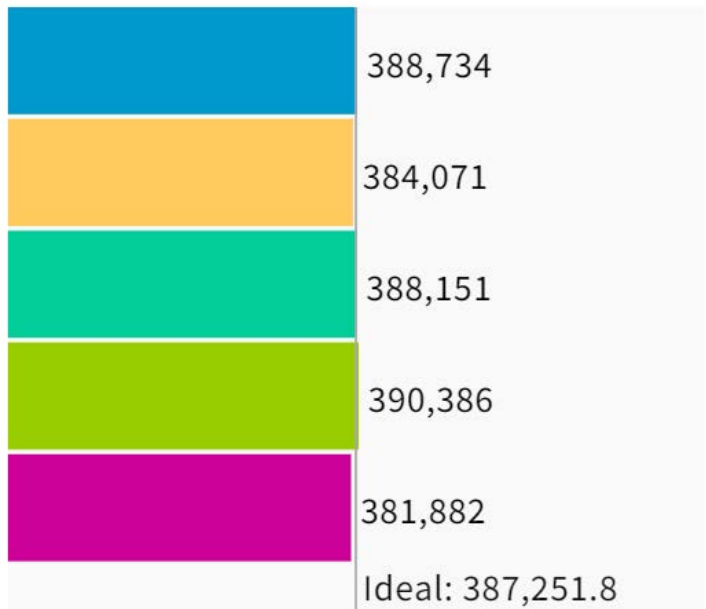
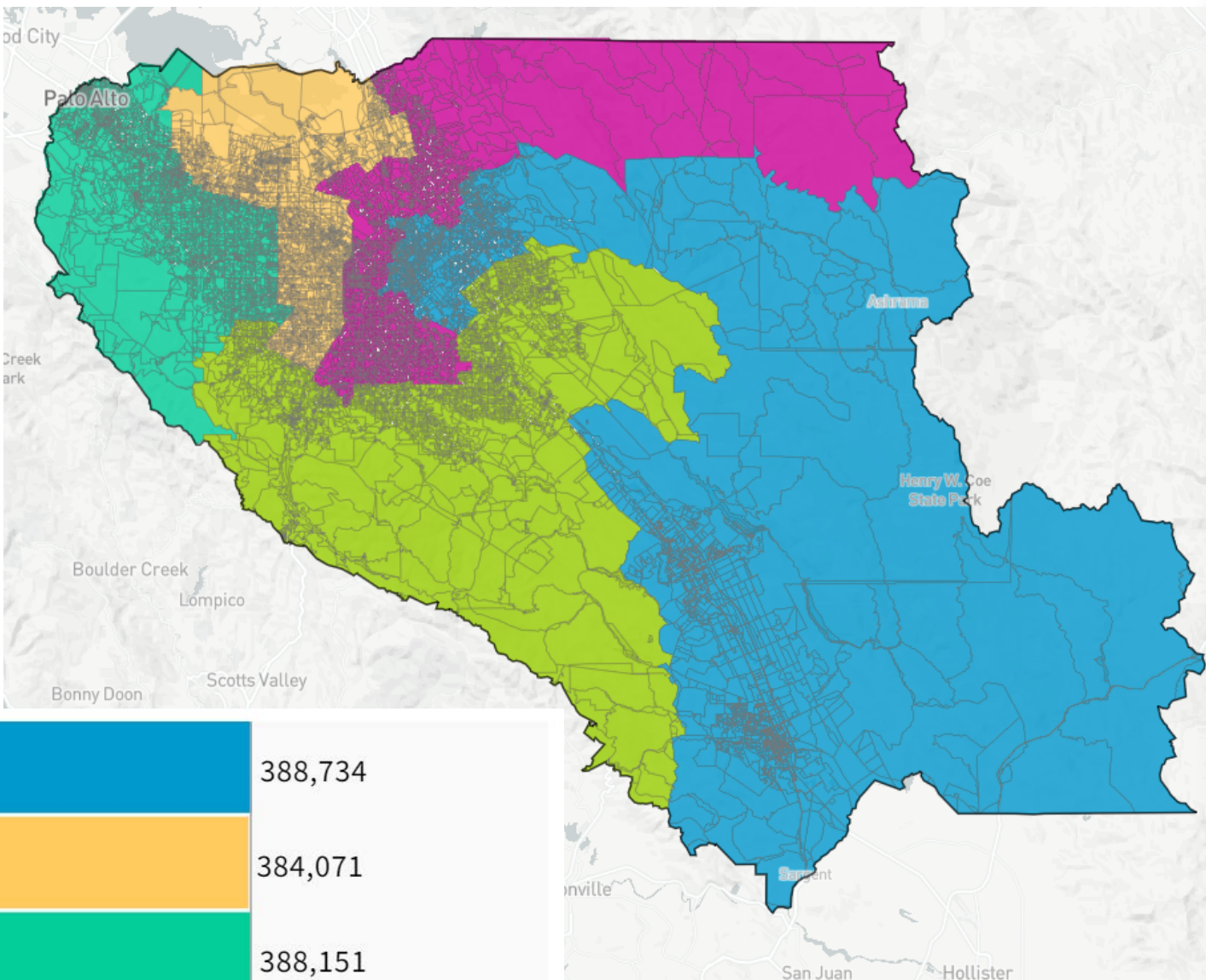


# 127 EDV: Equitable Distribution of Votes Map (68617)



UNASSIGNED POPULATION: 3,035  
 MAX. POPULATION DEVIATION: 1.39%



Population Data Layers Evaluation

## Population by Race

COMPARE Asian population

WITH White population

AND Hispanic population

	Asian	White	Hispanic
1	22.3%	19.9%	51.4%
2	45.9%	27.2%	19.3%
3	46.7%	37%	9.3%
4	39.7%	30.3%	22.9%
5	40%	29.2%	22.8%
Overall	38.9%	28.7%	25.2%

## Citizen Voting Age Population by Race

COMPARE Asian population

WITH Hispanic population

AND Black population

	Asian	Hispanic	Black
1	23.2%	41.1%	2.3%
2	30.5%	17%	3.1%
3	35.3%	6.5%	1.4%
4	34.5%	18.4%	2.3%
5	34.4%	17.7%	3.2%
Overall	31.6%	20.3%	2.5%