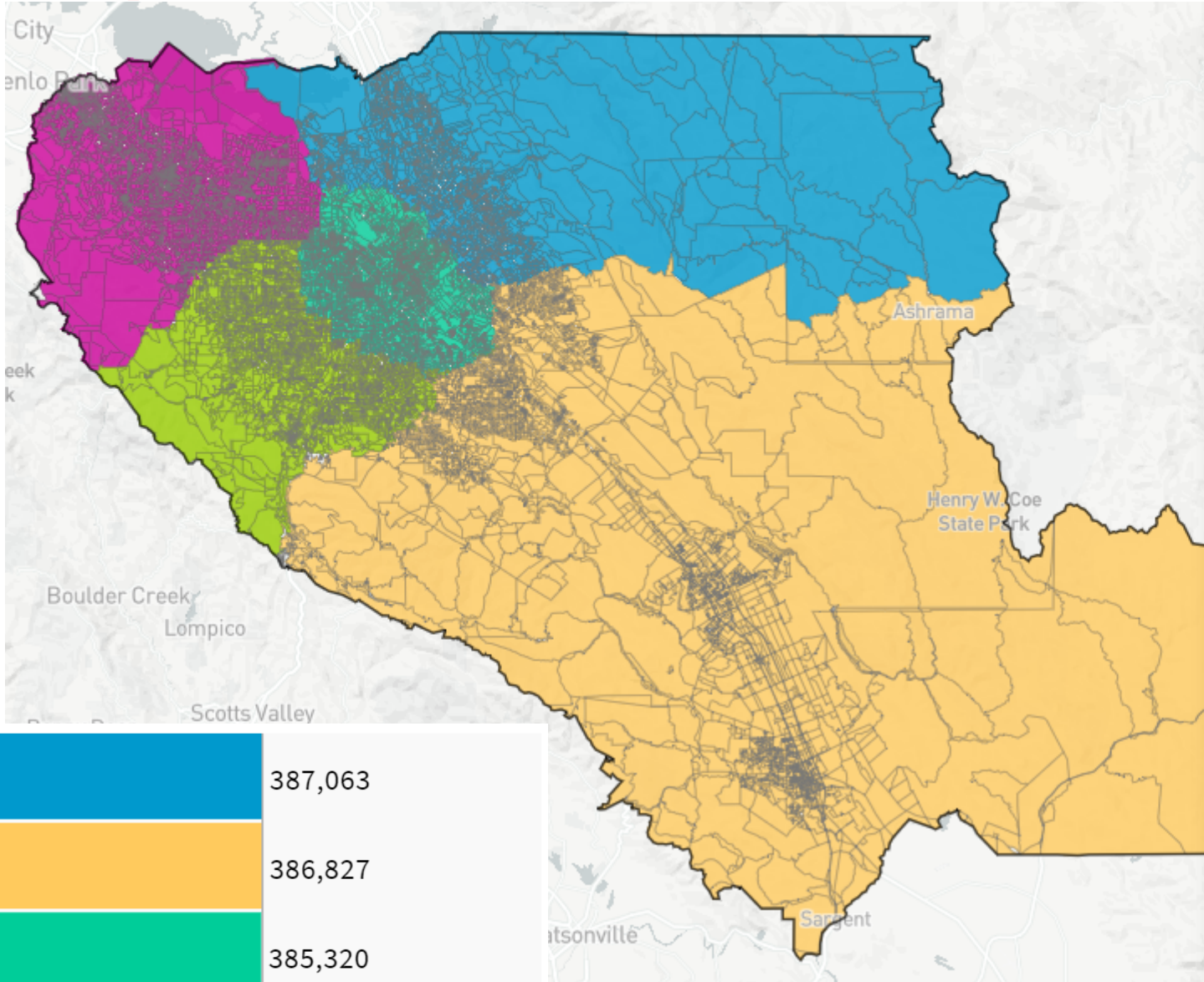


# 85 Map of 66798



Population    Data Layers    Evaluation

## Population by Race

COMPARE

WITH

AND

	Asian	White	Hispanic
1	53.1%	10.8%	30.7%
2	31.3%	29.6%	31.6%
3	27.3%	27.9%	36.3%
4	42.2%	37.2%	13.5%
5	40.7%	38.1%	13.7%
<b>Overall</b>	<b>38.9%</b>	<b>28.7%</b>	<b>25.2%</b>

## Citizen Voting Age Population by Race

COMPARE

WITH

AND

	Asian	Hispanic	Black
1	49%	27.4%	2.8%
2	27.9%	25%	2.4%
3	23.4%	27.1%	3.7%
4	30.6%	10%	1.6%
5	28.8%	10.4%	1.8%
<b>Overall</b>	<b>31.6%</b>	<b>20.3%</b>	<b>2.5%</b>

	387,063
	386,827
	385,320
	383,309
	389,054
Ideal: 387,251.8	

UNASSIGNED POPULATION: 4,686  
 MAX. POPULATION DEVIATION: 1.02%