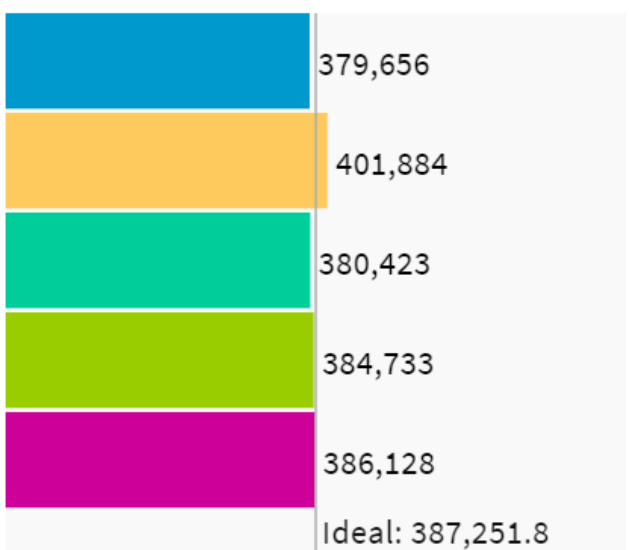
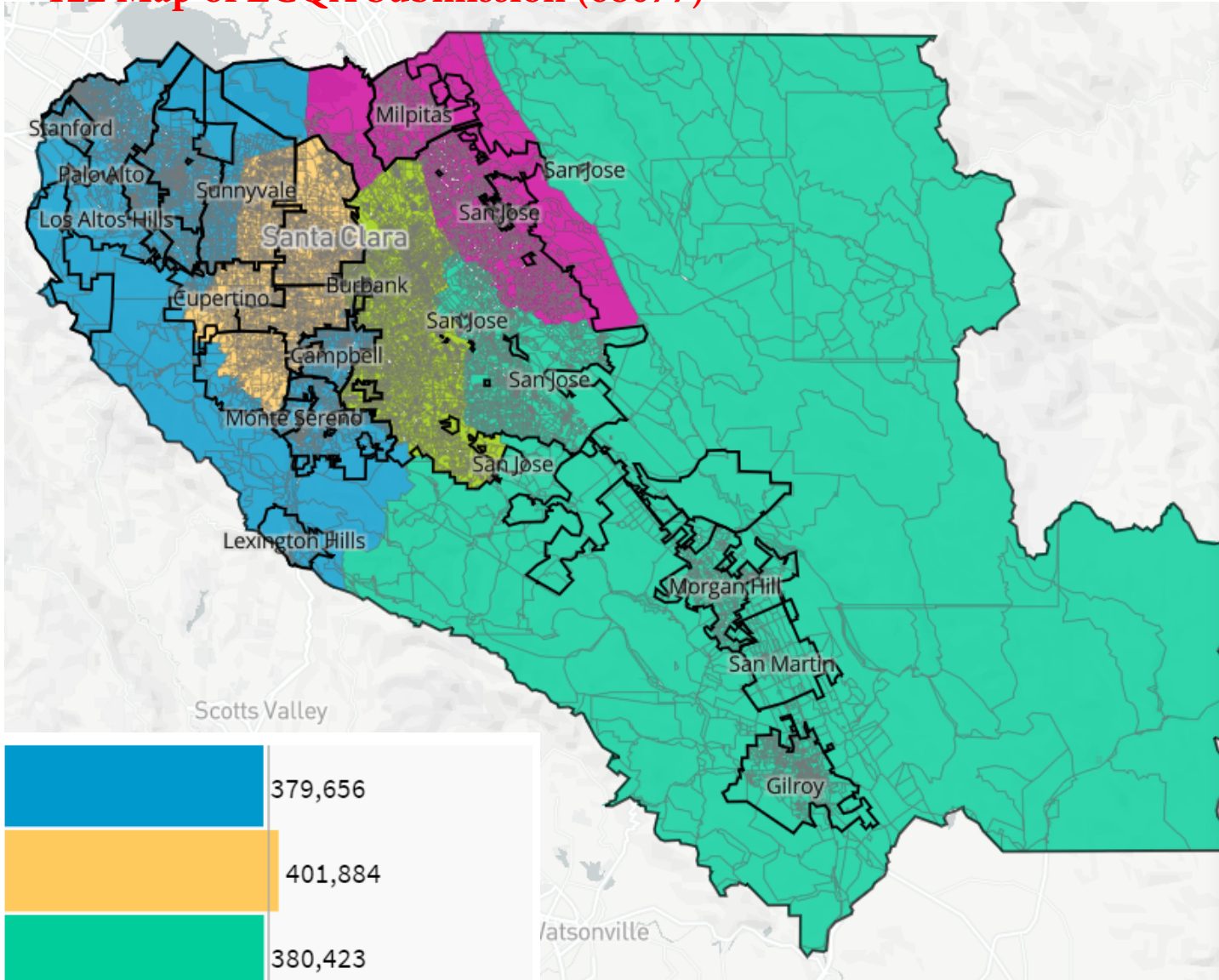


122 Map of ECQA Submission (68077)



UNASSIGNED POPULATION: 3,435
 MAX. POPULATION DEVIATION: 3.78%



Population Data Layers Evaluation

Population by Race

COMPARE Asian population

WITH White population

AND Hispanic population

	Asian	White	Hispanic
1	33.8%	46.6%	11.5%
2	51.4%	26.3%	15.7%
3	28.9%	24.4%	39.6%
4	25.1%	36.5%	29.3%
5	54.6%	10.1%	30.1%
Overall	38.9%	28.7%	25.2%

Citizen Voting Age Population by Race

COMPARE Asian population

WITH Hispanic population

AND Black population

	Asian	Hispanic	Black
1	23.7%	7.8%	1.7%
2	37.8%	12.9%	2.2%
3	27.1%	30.7%	2.4%
4	19.5%	21.9%	3.4%
5	51%	27.4%	2.5%
Overall	31.6%	20.3%	2.5%

https://districtr.org/edit/68077?event=santa_clara_county