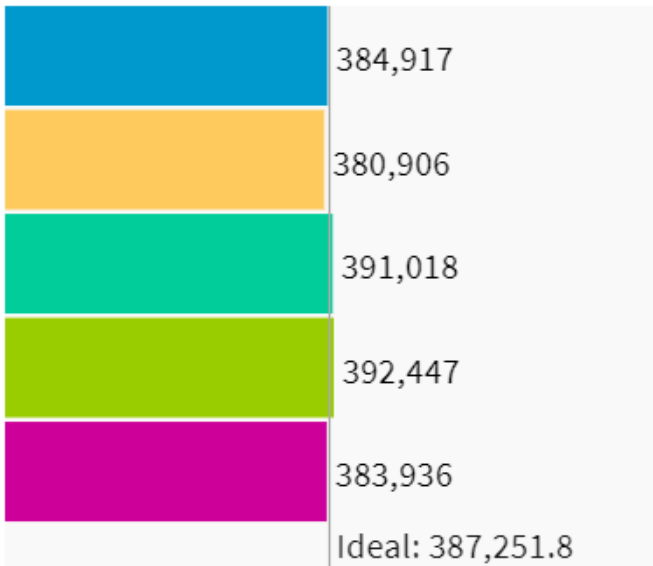
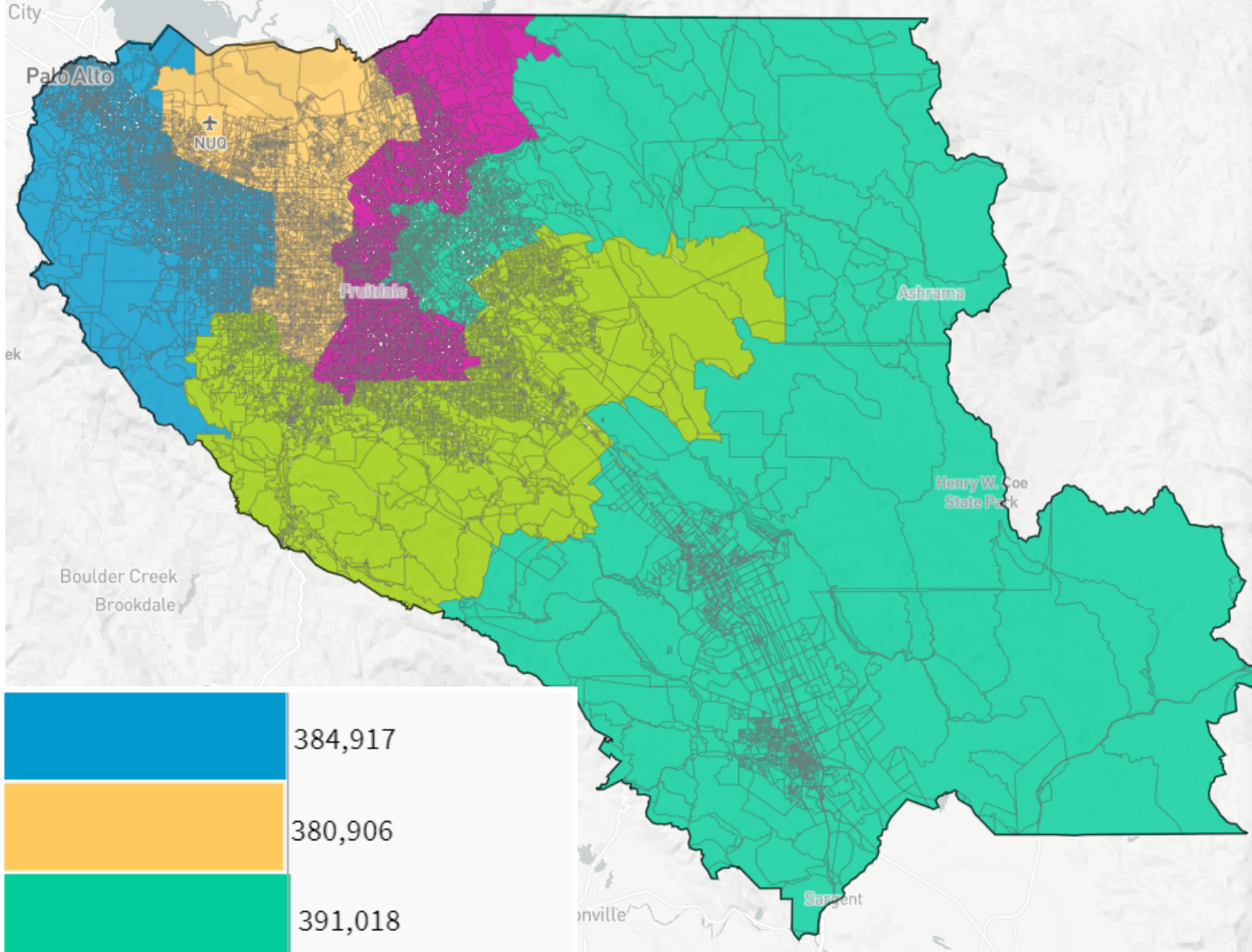


115 Mp of EEF: Equal, Equitable, and Fair Representation for ALL (67855)



UNASSIGNED POPULATION: 3,035
 MAX. POPULATION DEVIATION: 1.64%



Population Data Layers Evaluation

COMPARE Asian population
 WITH White population
 AND Hispanic population

	Asian	White	Hispanic
1	46%	37.1%	9.8%
2	46.9%	26.7%	18.8%
3	22.2%	20.2%	51.2%
4	40.1%	30.1%	22.8%
5	39.7%	29.5%	22.8%
Overall	38.9%	28.7%	25.2%

▼ Citizen Voting Age Population by Race

COMPARE Asian population
 WITH Hispanic population
 AND Black population

	Asian	Hispanic	Black
1	34.3%	6.8%	1.4%
2	32%	16.4%	3.1%
3	23.1%	40.9%	2.3%
4	34.8%	18.2%	2.3%
5	33.8%	17.8%	3.2%
Overall	31.6%	20.3%	2.5%