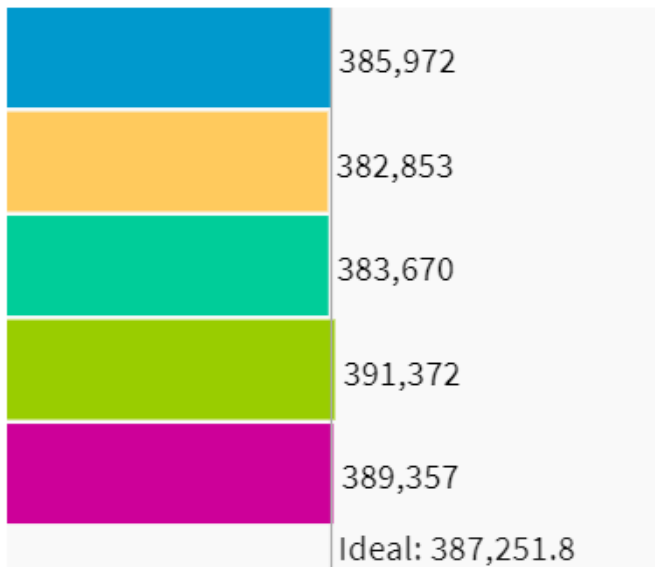
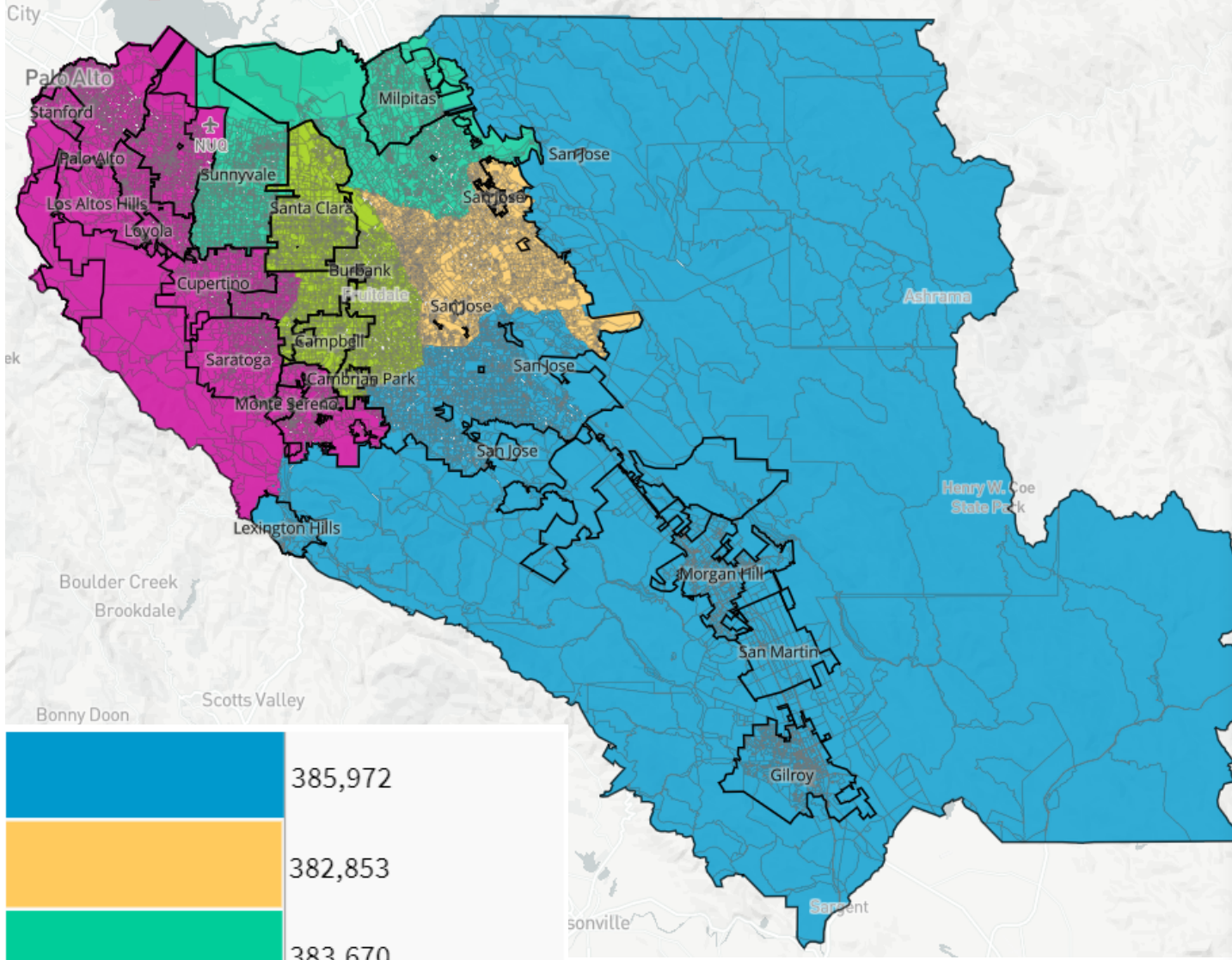


# 114 Map of EEF



UNASSIGNED POPULATION: 3,035

MAX. POPULATION DEVIATION: 1.14%



Population Data Layers Evaluation

## Population by Race

COMPARE Asian population

WITH White population

AND Hispanic population

	Asian	White	Hispanic
1	25%	33.4%	33.6%
2	36.6%	12.9%	44.4%
3	59.4%	18%	16.7%
4	30.9%	37.5%	22.8%
5	42.8%	41.4%	8.6%
Overall	38.9%	28.7%	25.2%

## Citizen Voting Age Population by Race

COMPARE Asian population

WITH Hispanic population

AND Black population

	Asian	Hispanic	Black
1	21.2%	25.7%	2.5%
2	37.5%	36.1%	3%
3	50.1%	15.6%	2.5%
4	19.6%	17.4%	3%
5	33%	5.8%	1.3%
Overall	31.6%	20.3%	2.5%