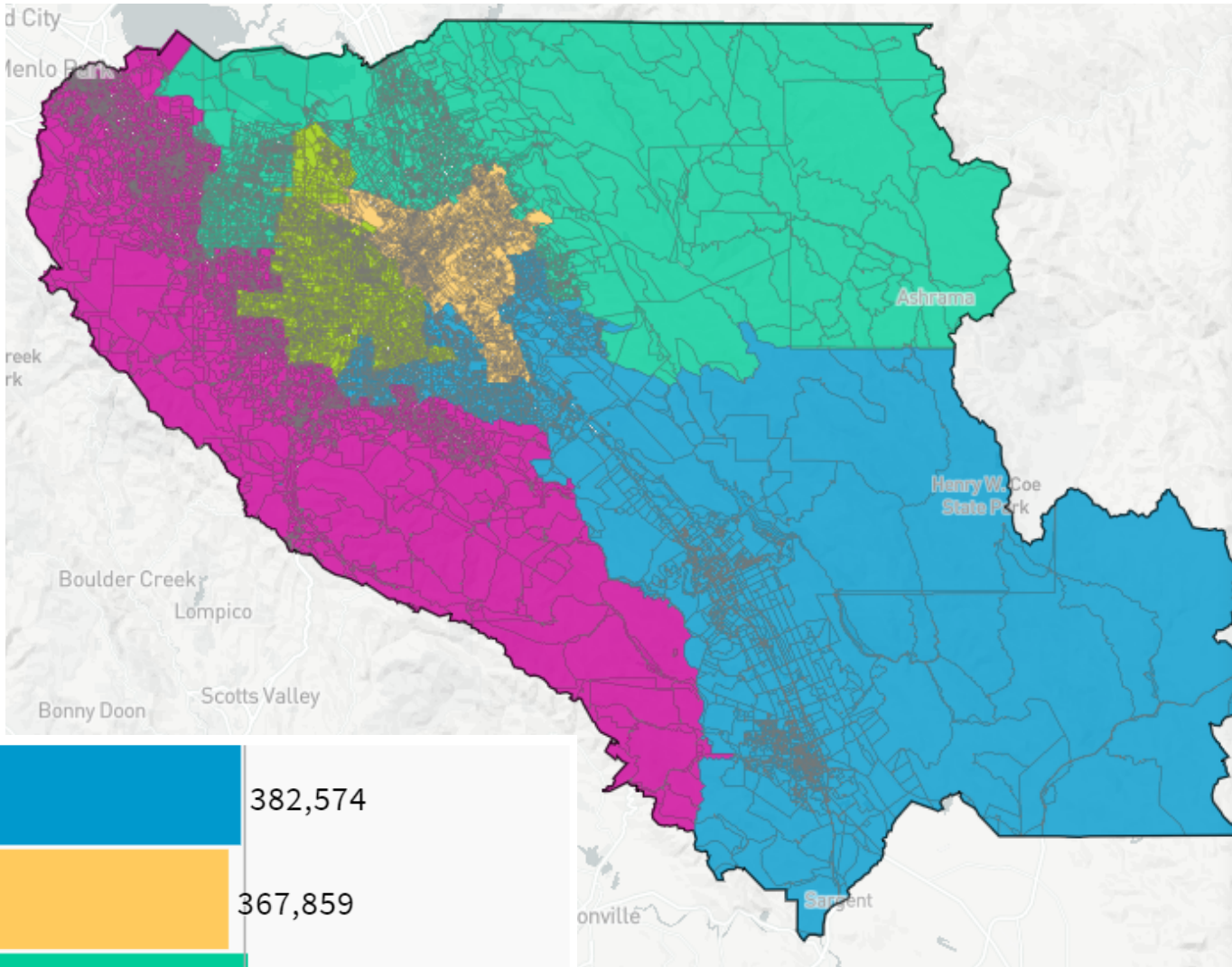


109 Updated Unity Map



UNASSIGNED POPULATION: 3,048
 MAX. POPULATION DEVIATION: 5.06%



Population Data Layers Evaluation

Population by Race

COMPARE

WITH

AND

	Asian	White	Hispanic
1	28.2%	31.8%	31.9%
2	31.2%	12%	50.7%
3	59.9%	18.5%	15.6%
4	35.4%	35.3%	20.9%
5	39.1%	44.5%	9%
Overall	38.9%	28.7%	25.2%

Citizen Voting Age Population by Race

COMPARE

WITH

AND

	Asian	Hispanic	Black
1	23.5%	25.1%	2.7%
2	33.7%	40.7%	3.1%
3	50%	15.1%	2.4%
4	23.5%	16%	2.9%
5	29.8%	6.1%	1.3%
Overall	31.6%	20.3%	2.5%