

From: [James Nakamura](#)
To: [2021redistricting](#)
Cc: [REDACTED]
Subject: [EXTERNAL] Alternative Santa Clara County Supervisorial Redistricting Plan
Date: Wednesday, October 20, 2021 3:09:57 AM
Attachments: [Alternative Santa Clara County Supervisorial Redistricting Plan.pdf](#)
[Santa Clara County, Alternative Plan 1.zip](#)
[Santa Clara County, Alternative Plan 1,block-assignments.csv](#)

Dear Santa Clara County Staff:

Attached is my alternative Santa Clara County supervisorial redistricting plan.

With this redistricting plan most of the Evergreen portion of San Jose would be in Supervisorial District 3; at present much of the Evergreen portion of San Jose is in Supervisorial District 3.

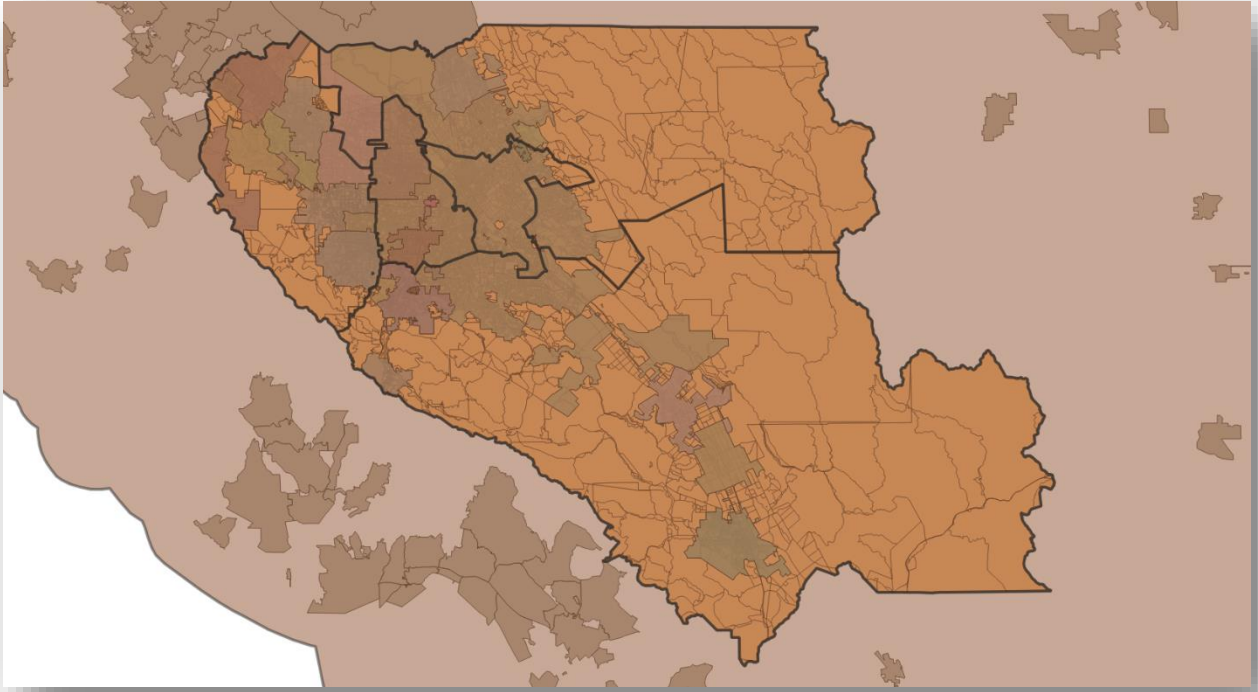
Placing most or all of the Evergreen San Jose neighborhood into Supervisorial District 1, a supervisorial district which includes Morgan Hill and Gilroy is a very bad idea.

Thank you for your consideration.

Sincerely,

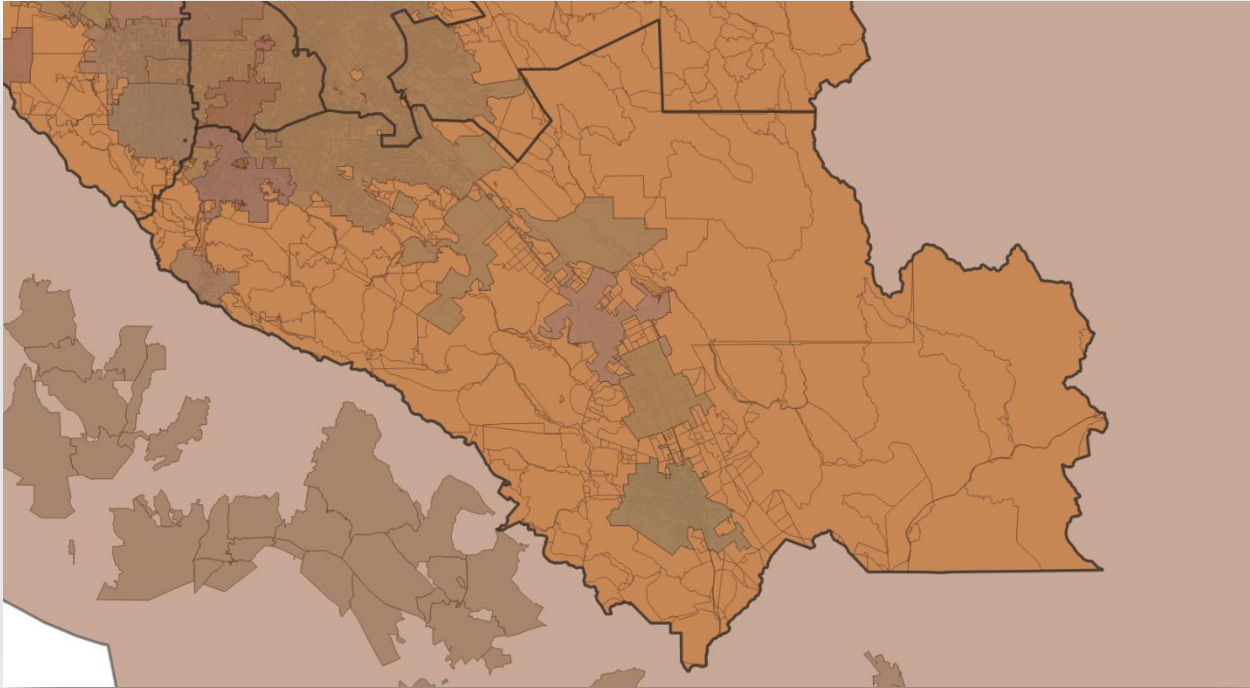
James Nakamura

Alternative Santa Clara County Supervisorial Redistricting Plan

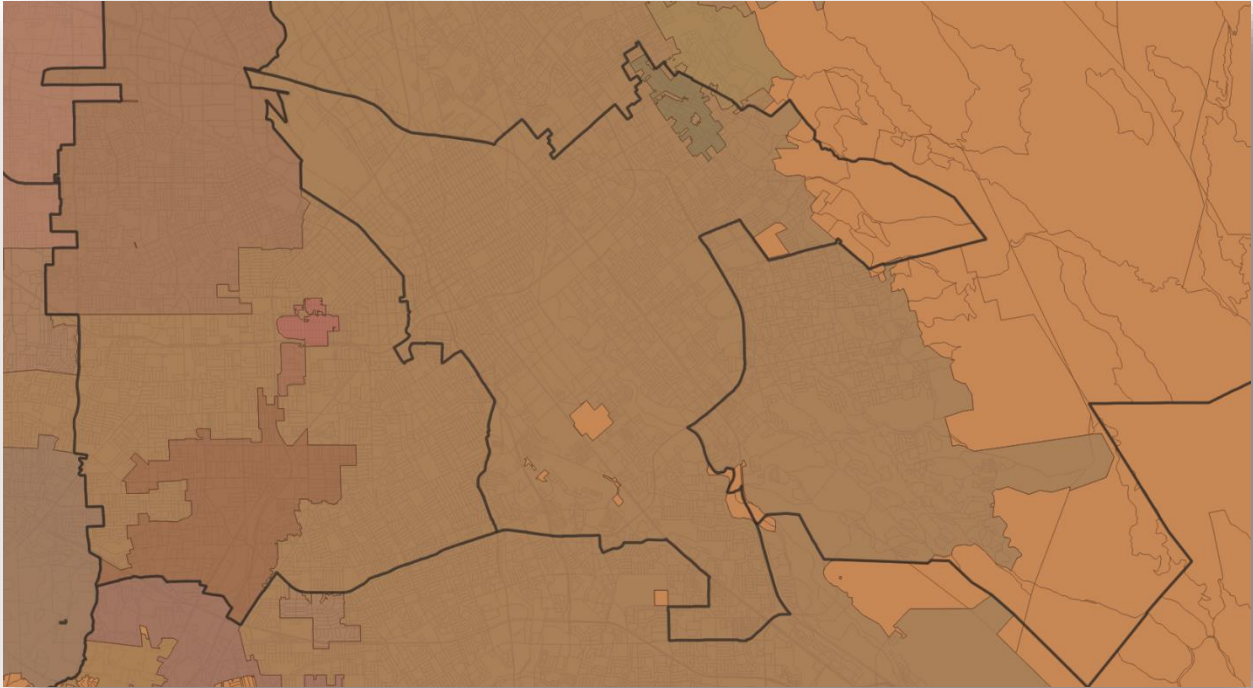


With this redistricting plan most of the Evergreen portion of San Jose would be in Supervisorial District 3. At present much of the Evergreen portion of San Jose is in Supervisorial District 3.

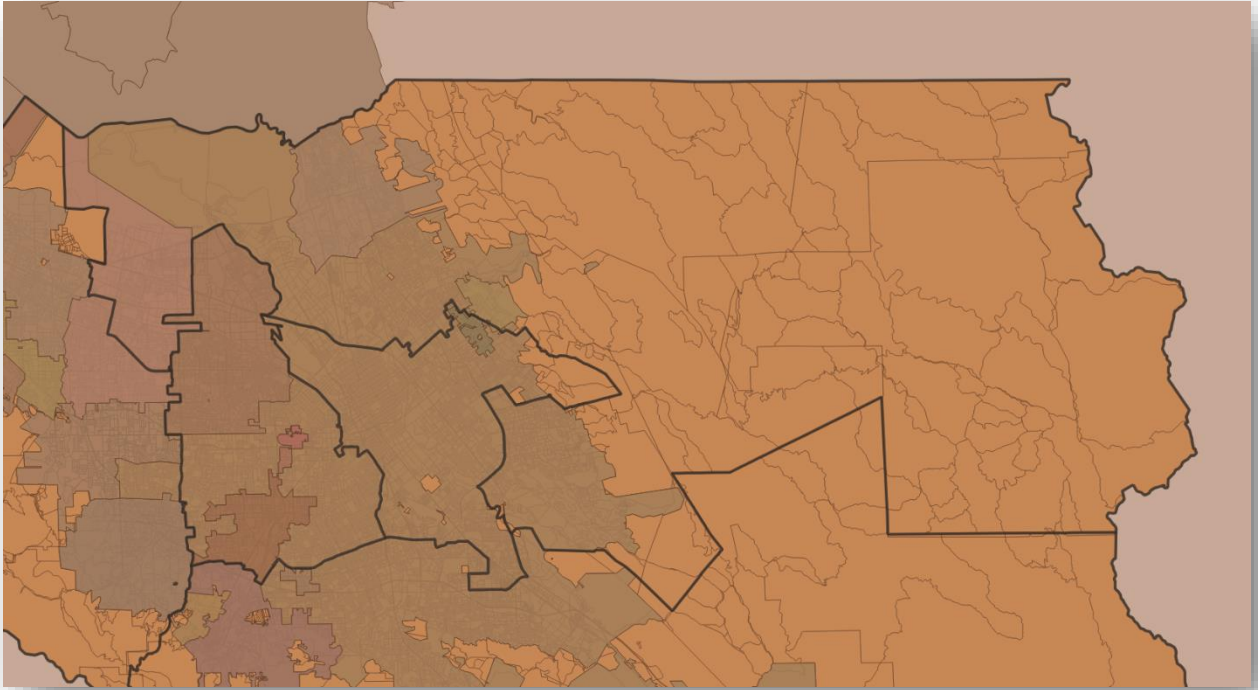
Supervisorial District 1



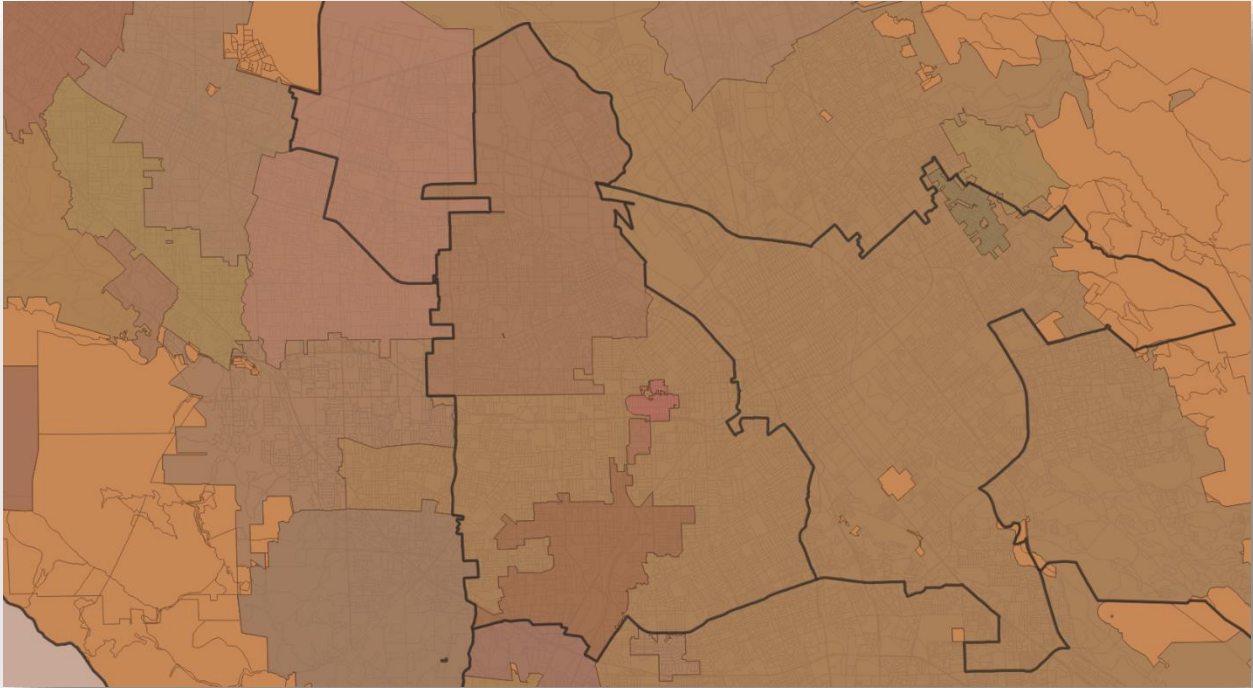
Supervisorial District 2



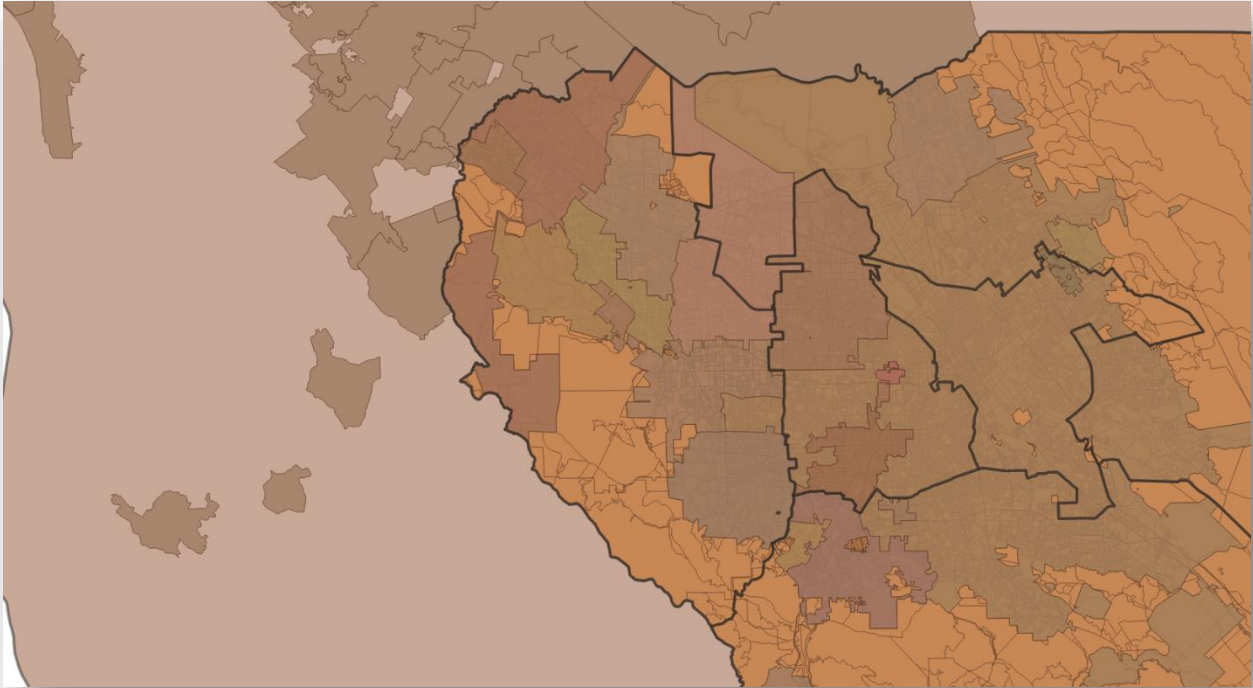
Supervisorial District 3



Supervisorial District 4



Supervisorial District 5



Presented by James Nakamura