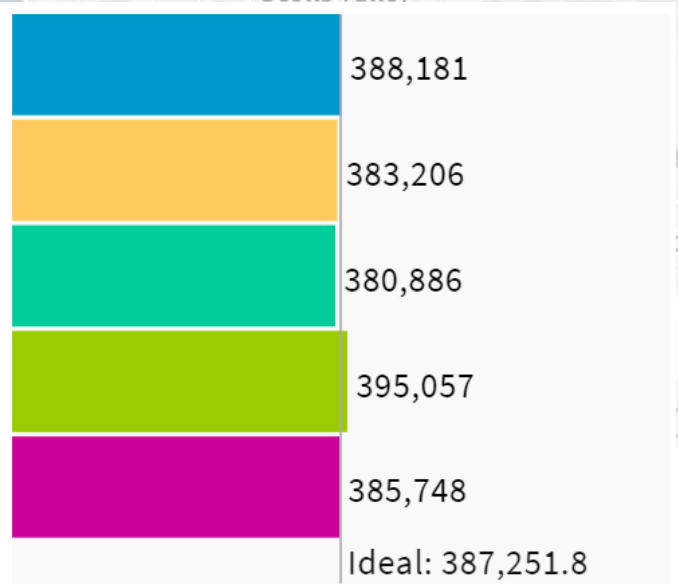
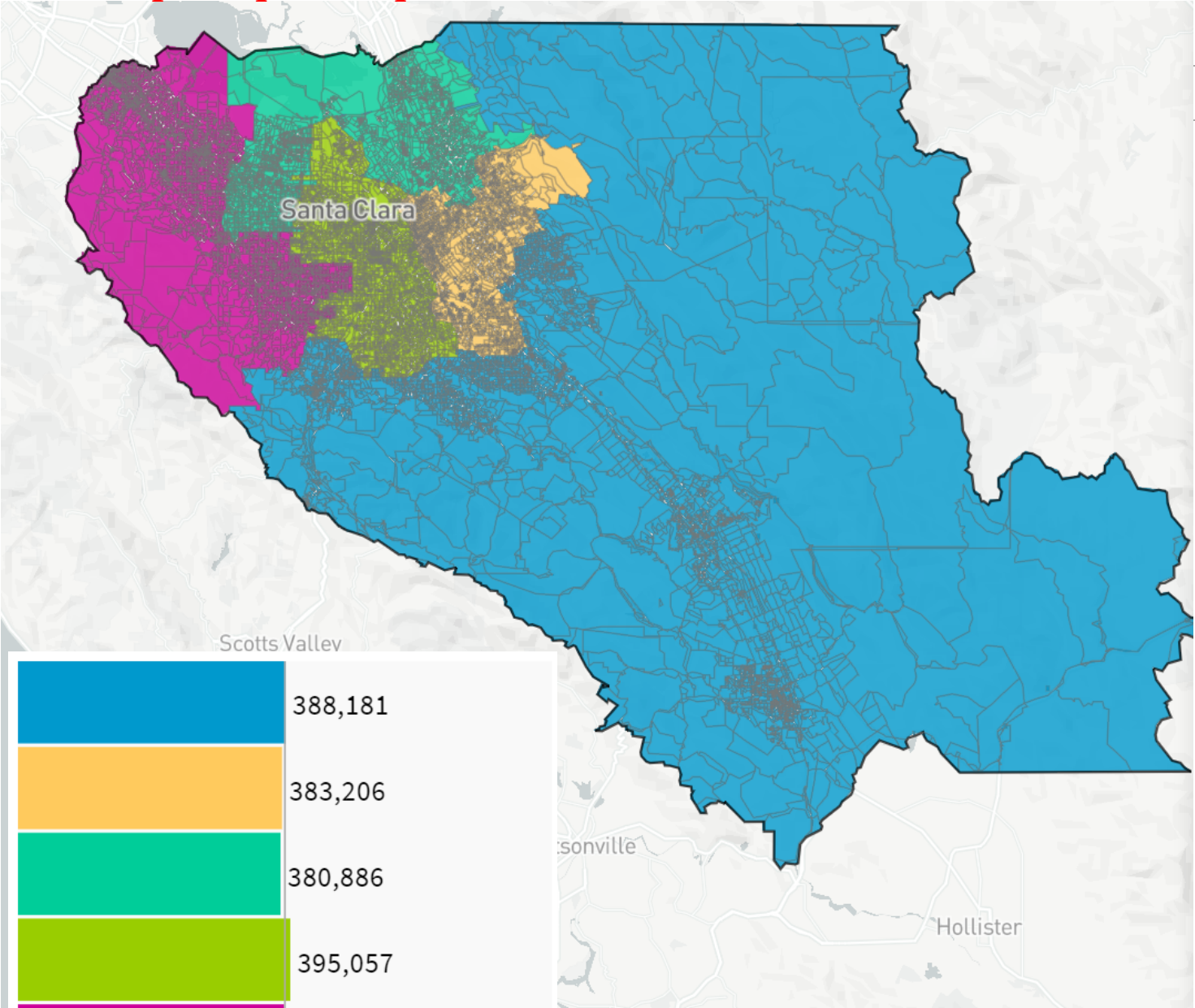


# 102 Map of Equal & Equitable 2.0



UNASSIGNED POPULATION: 3,181  
 MAX. POPULATION DEVIATION: 2.02%



Population Data Layers Evaluation

**Population by Race**

COMPARE: Asian population

WITH: White population

AND: Hispanic population

	Asian	White	Hispanic
1	30.1%	35.4%	27.1%
2	31%	13.5%	49.1%
3	59.6%	18%	16.5%
4	30.4%	38.3%	22.5%
5	43.9%	37.9%	10.8%
Overall	38.9%	28.7%	25.2%

**Citizen Voting Age Population by Race**

COMPARE: Asian population

WITH: Hispanic population

AND: Black population

	Asian	Hispanic	Black
1	25.5%	21.4%	1.9%
2	32.6%	39.4%	3.3%
3	50.2%	15.4%	2.5%
4	19.6%	17.5%	3.1%
5	34%	7.1%	1.5%
Overall	31.6%	20.3%	2.5%